

## Lesson 18

- When two or more musical lines are performed simultaneously, they create *harmony*.
- When singing in two-part harmony:

One section sings this line →

Another section sings this line →

## Rhythm Exercises

1.

2.

## UNIT 5

## Pitch Exercises

3.





# FUN SHEET



Fill in the correct term for each definition below. Circle each term in the Word Search.

**WORD BANK:** ACEG, Bass clef, Dot, Double bar line, EGBDF, Eighth rest, Flag, Measure, Treble clef, Two eighth notes, Whole note, Whole rest

Words may go → , ← , ↑ or ↓

End of a piece \_\_\_\_\_ Equals 4 beats in 4/4 time \_\_\_\_\_

Lines in the G clef \_\_\_\_\_ 1/2 beat silence in 4/4 time \_\_\_\_\_

Circles around line 2 (the G line) \_\_\_\_\_ Goes in the space ABOVE a line note or in the same space as a space note \_\_\_\_\_

ALWAYS points RIGHT \_\_\_\_\_ Another name for the F clef \_\_\_\_\_

Spaces in the F clef \_\_\_\_\_ Rest for a whole measure \_\_\_\_\_

Space between 2 bar lines \_\_\_\_\_ Joined by a beam (equals 1 beat) \_\_\_\_\_

G	M	C	R	W	A	C	E	G	F	S	H	J	O	S
R	U	G	F	L	F	Z	U	K	O	C	M	W	Y	P
A	T	O	D	Q	F	B	E	V	O	D	R	H	B	E
C	E	Y	B	U	L	T	M	R	B	V	D	O	A	N
O	N	E	G	B	A	F	X	W	D	P	T	L	S	I
T	W	O	E	I	G	H	T	H	N	O	T	E	S	L
R	B	S	I	Y	T	R	O	O	B	Z	F	R	C	R
E	E	C	G	C	W	N	P	L	N	G	V	E	L	A
B	K	X	H	L	I	F	E	E	Y	M	E	S	E	B
L	I	E	T	A	I	S	D	N	I	G	H	T	F	E
E	N	P	H	M	H	A	P	O	W	O	R	K	X	L
C	D	Y	R	G	I	F	T	T	H	A	R	D	H	B
L	I	A	E	S	I	J	M	E	A	S	U	R	E	U
E	Y	C	S	E	C	R	E	B	I	T	H	K	Z	O
F	K	A	T	H	O	L	N	E	G	B	D	F	L	D



## LESSON 18 REVIEW

1. The major scale pattern is: \_\_\_\_\_.
2. In a major scale, half steps are between scale degrees \_\_\_ & \_\_\_ and \_\_\_ & \_\_\_.

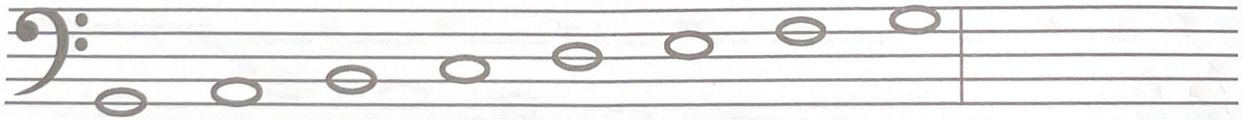
On the following major scales:

- A. Start on the given note and write the letter names of the notes in the scale going UP in the appropriate blanks 'within' the major scale pattern.
- B. Draw the double bar line at the end of each grand staff or single staff.
- C. Mark the half steps on *each* staff where they occur in a major scale with slurs.
- D. Draw sharps or flats as needed before the notes to make a major scale.
- E. In the last measure, draw a whole note on the tonic note.

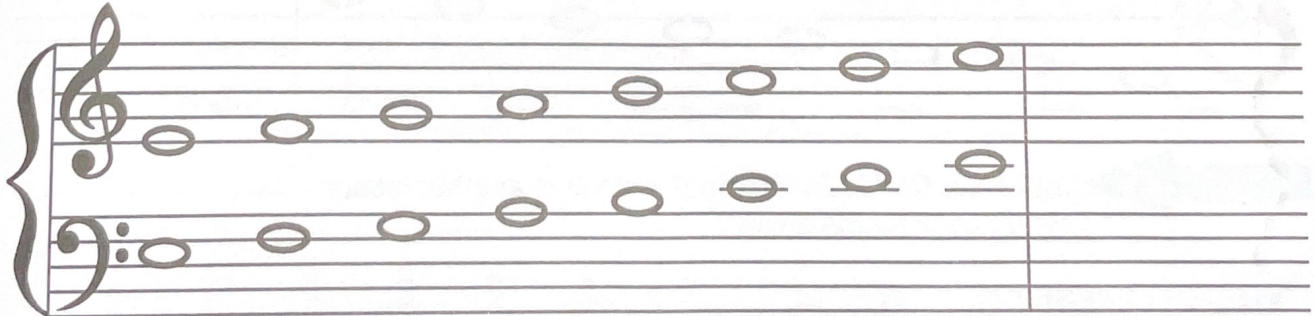
**BONUS:** Draw the key signature after the bar line.



3.  G  w \_\_\_\_\_ w \_\_\_\_\_ H \_\_\_\_\_ w \_\_\_\_\_ w \_\_\_\_\_ w \_\_\_\_\_ H \_\_\_\_\_

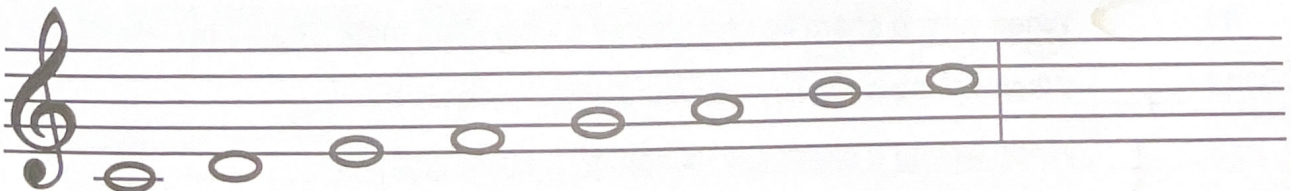


4.  E  w \_\_\_\_\_ w \_\_\_\_\_ H \_\_\_\_\_ w \_\_\_\_\_ w \_\_\_\_\_ w \_\_\_\_\_ H \_\_\_\_\_



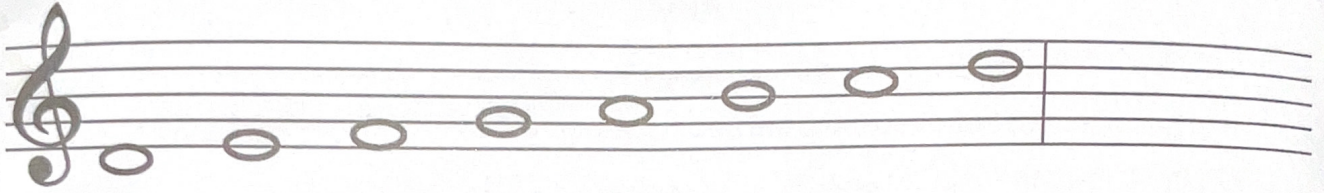
E Major uses ledger lines <sup>^^^</sup>. See Glossary in back.

5.  C  w \_\_\_\_\_ w \_\_\_\_\_ H \_\_\_\_\_ w \_\_\_\_\_ w \_\_\_\_\_ w \_\_\_\_\_ H \_\_\_\_\_

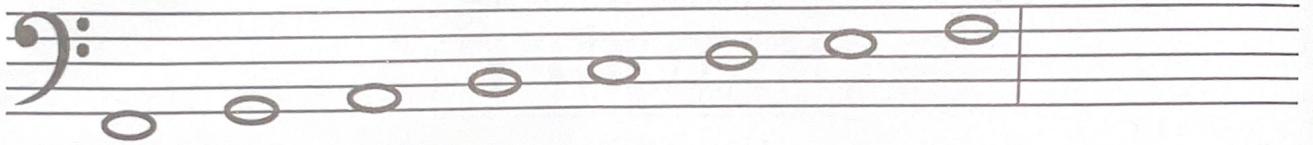




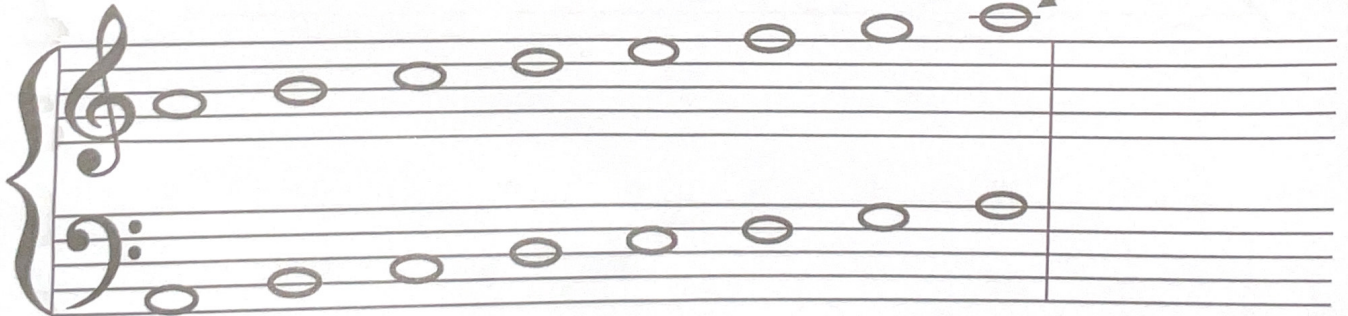
6. D W \_\_\_ W \_\_\_ H \_\_\_ W \_\_\_ W \_\_\_ W \_\_\_ H \_\_\_



7. F W \_\_\_ W \_\_\_ H \_\_\_ W \_\_\_ W \_\_\_ W \_\_\_ H \_\_\_



8. A W \_\_\_ W \_\_\_ H \_\_\_ W \_\_\_ W \_\_\_ W \_\_\_ H \_\_\_ (ledger line)



Look for a **CHALLENGE** for this page in another lesson.  
*HINT: Look for the arrow.*

**TRUE or FALSE?**

9. \_\_\_ The whole and half step pattern of the Major scale determines which sharps or flats are used in a Major scale.
10. \_\_\_ Half steps in a Major scale are between 3 4 and 6 7.
11. \_\_\_ When writing sharp key signatures on the staff, think "High-Low-High-Low".
12. \_\_\_ When writing a flat key signature, the first flat is F.
13. \_\_\_ When writing a sharp key signature, the first sharp is F.
14. \_\_\_ The order of sharps written backwards is the order of flats.

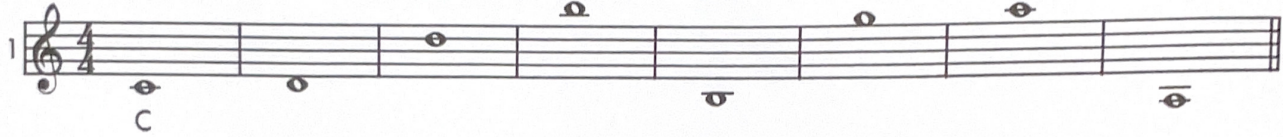





## Lesson 16 (Review)

## STUDENT ASSIGNMENT

Write the letter names under each note in Ex. 1-2-3-4.

1 

C

2 

B

3 

G

4 

F

Write the letter names under each note and draw the missing bar lines in Ex. 5-6-7-8. Count and sing.

5 

A

6 

C

7 

A

8 

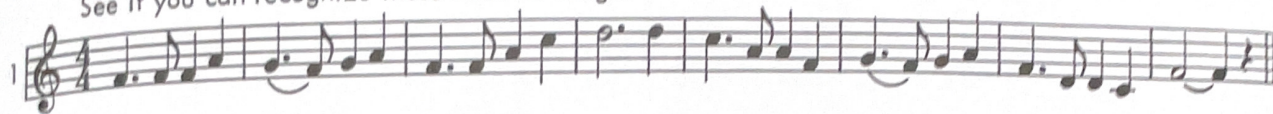
D

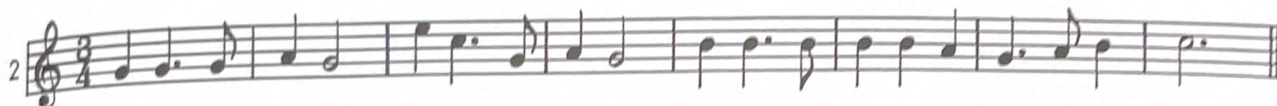


# Lesson 26 (Review)

## STUDENT ASSIGNMENT

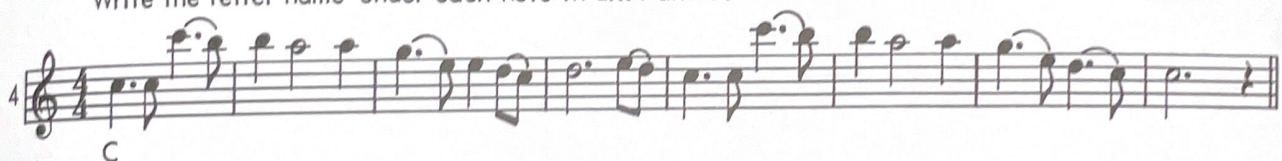
Write the beats under each note and rest in Ex. 1-2-3. Count - Tap - Sing.  
See if you can recognize these familiar songs.

1 

2 

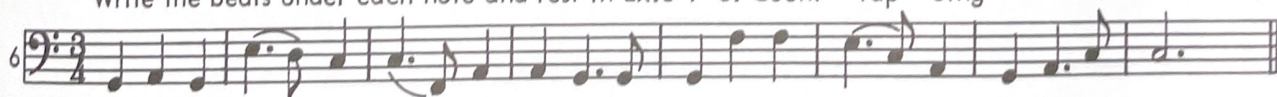
3 

Write the letter name under each note in Ex. 4 and 5.

4 

5 

Write the beats under each note and rest in Ex. 6-7-8. Count - Tap - Sing

6 

7 

8 